

# CLASS OFFICERS



SENIOR CLASS OFFICERS—*Left to right:* Eugene Cooper, Joyce Overton, Jim Anthony, Joe McLendon.

JIM ANTHONY.....*President*  
EUGENE COOPER.....*Vice-President*



SENIOR REPRESENTATIVES—*First row, left to right:* Barbara Weikert, Mary Ann Fletcher, Joan Bear. *Back row:* B. L. Johnston, Pat Abernathy, Diane Parker.

JOYCE OVERTON.....*Secretary*  
JOE McCLENDON.....*Treasurer*

SENIOR ADVISORS—*Front row, left to right:* Mrs. Richardson, Miss Byrd, Mrs. Alford, Miss Baxter. *Back row:* Mrs. Weaver, Mrs. Bruce.

CLASS COLORS  
Blue and White

CLASS MOTTO  
Today we learn,  
Tomorrow we lead

CLASS FLOWER  
Red Rose





# SENIORS

PATRICIA GANELLE ABERNATHY

*Pat*

Honor Court 2 years (Vice-Chairman 1 year), S. C. A. 1 year, Sigma Tri-Hi-Y 2 years (Secretary 1 year) Annual Staff 1 year (Art Editor), Glee Club 2 years, Art Club 1 year, Latin Club 3 years (Vice-President 1 year), Beta Club 1 year, Softball 1 year, Band 3 years, Treasurer of Freshman Class.

CHARLES McKNIGHT AMICK, JR.

*Charlie*

Monogram Club, Football '46 and '48

PAULINE SAMUEL ALDRICH

*Polly*

JAMES PHILIP ANTHONY

*Jim*

Monogram Club 3 years, President of Presidents' Club, President of Senior Class, Annual Staff, Football 3 years, Basketball 1 year, Bus Conductor 2 years.

CATHERINE ROSEMARY ASKEW

*Kathy*

Art Club 3 years (Co-Secretary, Vice-President, Sergeant-at-Arms), Latin Club 3 years, Monogram Club 2 years, Distributive Education (Alternate to Convention), Girls' Chorus 1 year, Sigma Tri-Hi-Y 2 years (Sergeant-at-Arms), Beta Club 1 year, Softball team, Annual Staff (Art Editor).

JOSEPH ALDEN BARNETTE

*Alden*

Distributive Education Club, Circulation Manager of Shipmate.

NORMA JEAN ATKINS

*Jeanie*

Home Economics Club 2 years, Bible Club 2 years, Softball team 1 year.

RALPH ELWOOD BARRETT

*Elwood*

Dramatic Club, Vice-President

CAROLYN SUE AVIS

*Kitty*

S. C. A. 2 years, Sigma Tri-Hi-Y 2 years (President 2 years), Beta Club 2 years, Presidents' Club 2 years, Art Club 1 year, Home Economics Club 1 year, Chairman of Lost and Found Committee 1 year, Chairman of Clubs' Committee 1 year.

GARVIN L. BECK, JR.

*Sonny*

Basketball, Baseball

PHYLLIS LORRAINE BACKUS

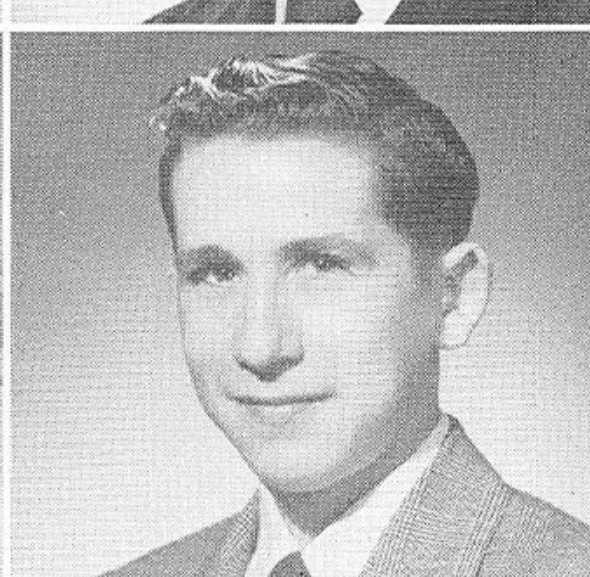
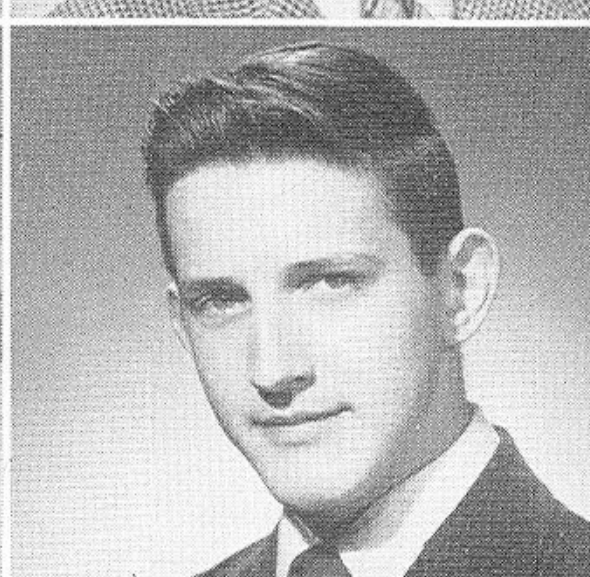
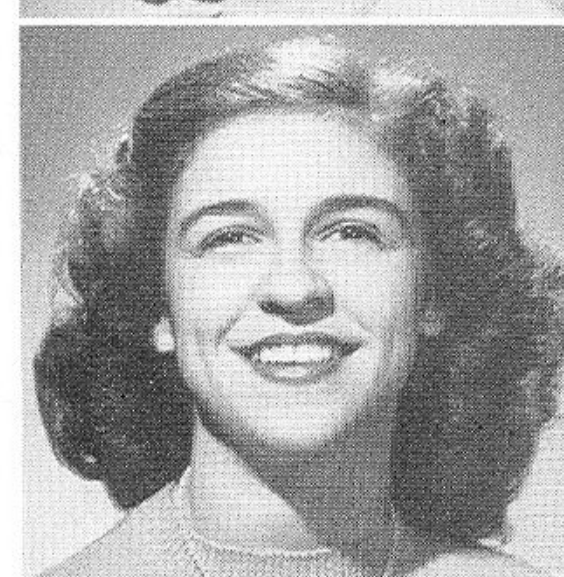
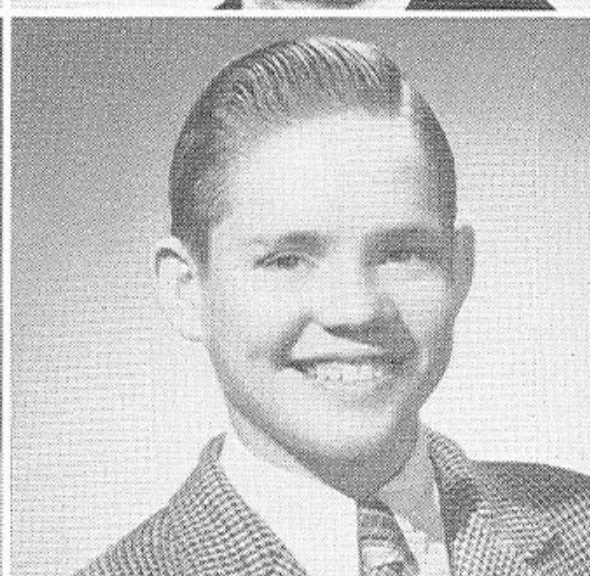
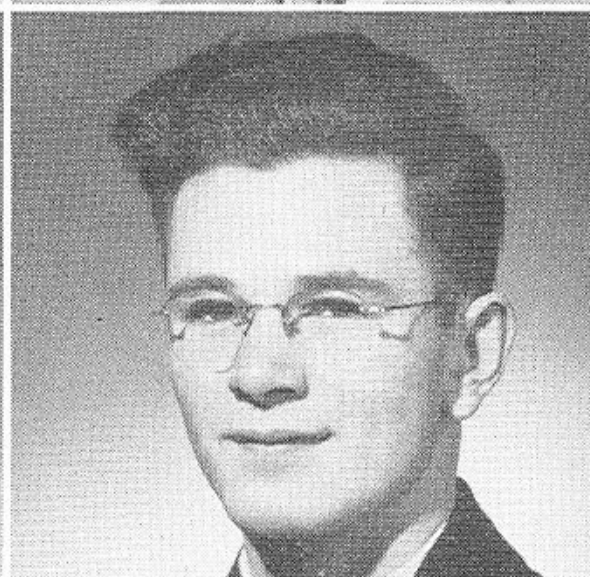
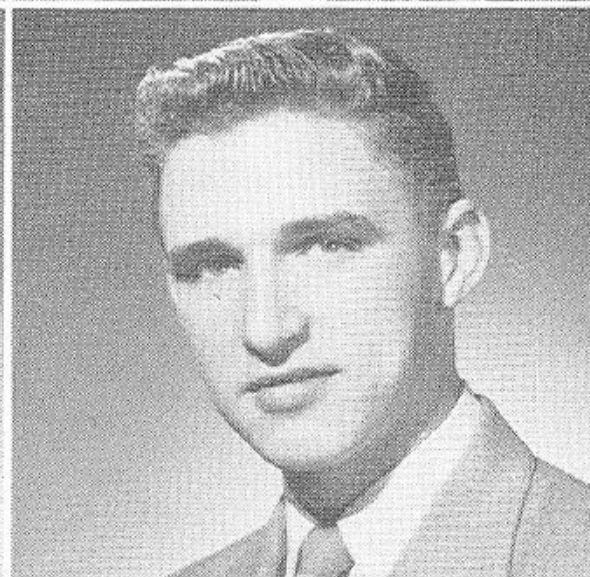
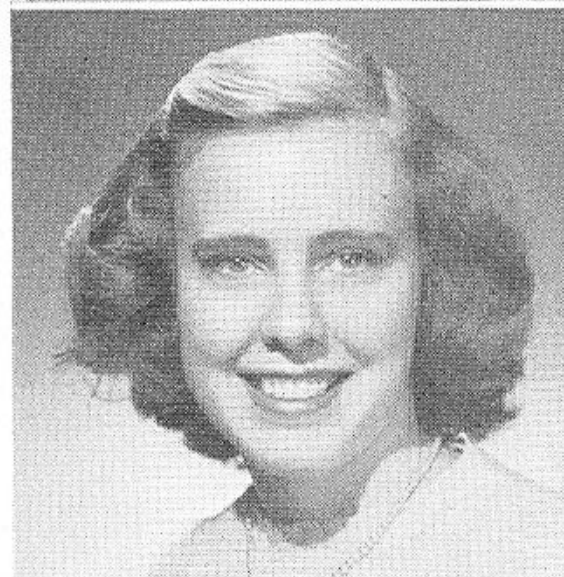
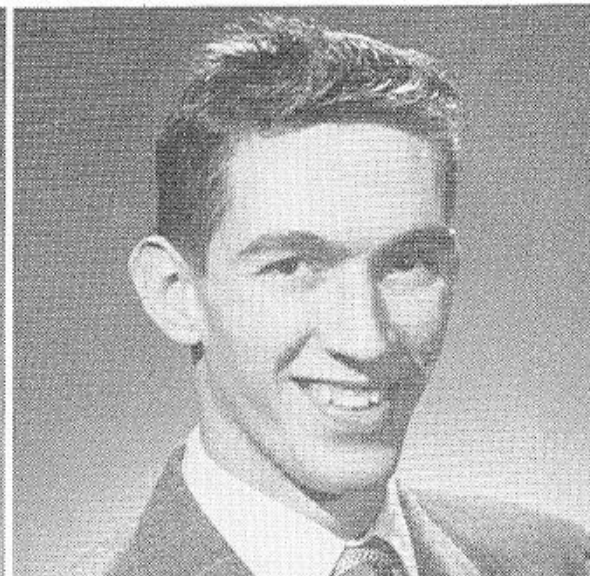
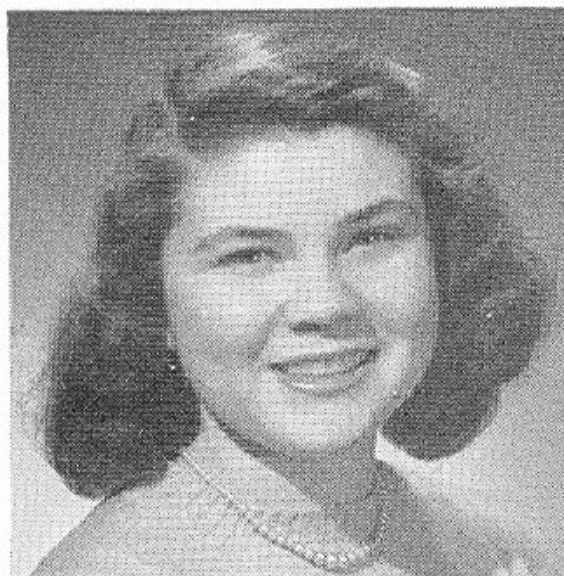
*Phil*

President of Freshman Homeroom 1 year, Distributive Education Club.

TRAVIS EARL BELCHER

*Travis*

Hi-Y Club, Safety Patrol, Science Club





# SENIORS

JAMES BENE

*Bene*

JOAN ELIZABETH BEAR

*Jody*

Dramatic Club 1 year, Latin Club 3 years (Vice-President, President), Beta Club 1 year, Tri-Hi-Y 2 years, Presidents' Club 1 year, Senior Committee, Club Committee 1 year.

TALTON MONROE BENFIELD

*Benny*

Bible Club

BARBARA SUE BENNETT

*Barbara*

F. H. A. 2 years, Shipmate 2 years (Reporter, Advertising Manager), Omega Tri-Hi-Y.

CARSON FORREST BRANDON

*Carson*

PHYLLIS JEAN BOLEN

*Phil*

Dramatic Club, Distributive Education Club, President of Camera Club at Alexander Park.

CLYDE TYREE BRENNAMAN

*Bru*

Band 4 years (Officer 2 years), Hi-Y 2 years (Vice-President 1 year), Debate Club 1 year, Latin Club 1 year, Honor Council 2 years, Beta Club 2 years (Sergeant-at-Arms 1 year), S. C. A. 1 year, Tennis 2 years, Senior Dramatic Club 1 year, Annual Staff (Advertising Manager), Monogram Club 1 year, Science Club 1 year, Presidents' Club 1 year.

EVA FAY BRADY

*Eva*

Social Committee 1 year, Dramatic Club 2 years, Distributive Education Club 1 year, Home Economics Club 1 year.

EDWARD L. BROOKS

*Brooksie*

Safety Patrol, Science Club

JEAN ELIZABETH BRAGG

*Peanuts*

Beta Club 2 years, Dramatic Club 2 years, Glee Club 2 years, Omega Tri-Hi-Y 1 year, Publicity Club 1 year, Bible Club 2 years, Shipmate (Reporter 1 year), Spanish Club 2 years.

RICHARD C. BUTLER

*Dick*

Track 2 years, Basketball 1 year, Football 1 year, Art Club 2 years, Monogram Club 2 years (Sergeant-at-Arms), Art Club 1 year.

ELIZABETH ANNE BROOKS

*Libby*

Treasurer of Sophomore Class, Secretary of Junior Class, Cheerleader 3 years (Head 1 year), Basketball 2 years (Manager 1 year), Home Economics Club 2 years (Vice-President 1 year), Spanish Club 2 years (Vice-President 1 year), Monogram Club 3 years (Secretary 1 year), Beta Club 2 years (Treasurer), Officers Club 1 year, Tri-Hi-Y 2 years, Annual Staff (Circulation Manager).



# SENIORS

HENRY M. CARTER, JR.

*Henry*

President of Freshman Class, S. C. A. 4 years (Vice-President 1 year, President 1 year), Tennis 2 years, Glee Club 3 years, Beta Club 2 years (Vice-President 1 year), Debate Club 3 years, Band 4 years (Captain 2 years), Presidents' Club 2 years.

JOE ANN BRYANT

*Joe*

Latin Club 4 years, Alpha Tri-H-Y 2 years, Publicity Club 1 year, National Staff, Shipmate Reporter 1 year, Dramatic Club 1 year.

FRED KEITH COFFEY

*Buddy*

DOROTHY LONG BUCKNER

*Dottie*

Dramatic Club 2 years, Distributive Education Club 1 year, Camera Club 1 year.

CHARLES EARNEST CONDEE, JR.

*Earnest*

Sports Editor of Shipmate, Beta Club

JEAN ELIZABETH BURNHAM

*Jeanie*

EUGENE CLIFTON COOPER

*Pop*

Football 4 years (Captain 1 year), Monogram Club 3 years (Sergeant-at-Arms), Vice-President of Junior Class, Vice-President of Senior Class, Library Club 2 years, Baseball 1 year, Bus driver 2 years, S. C. A. 1 year.

SHIRLEY CARLTON

*Shirley*

Distributive Education Club 1 year, French Club 1 year

HARRY STANLEY DALY

*Stanley*

NORMA PAIGE CARR

*Paige*

Home Economics Club 1 year, Art Club 1 year, Spanish Club 1 year, Beta Club 2 years, Sigma Tri-Hi-Y (Chaplain 2 years), S. C. A. 2 years, Attendance Committee 1 year, Business Manager of Annual.

WILLIAM HARRY DEROLF

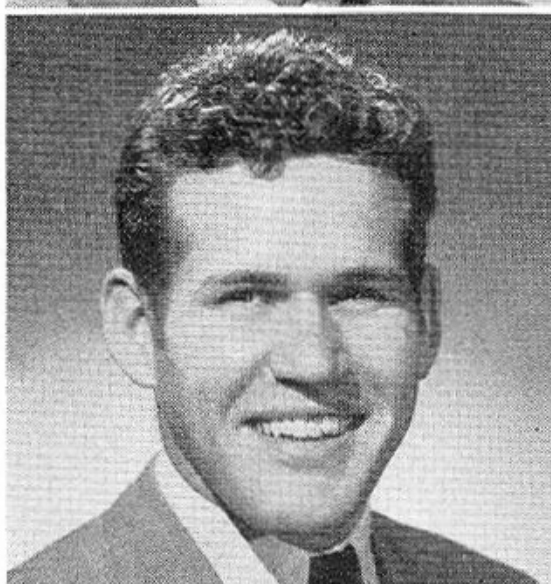
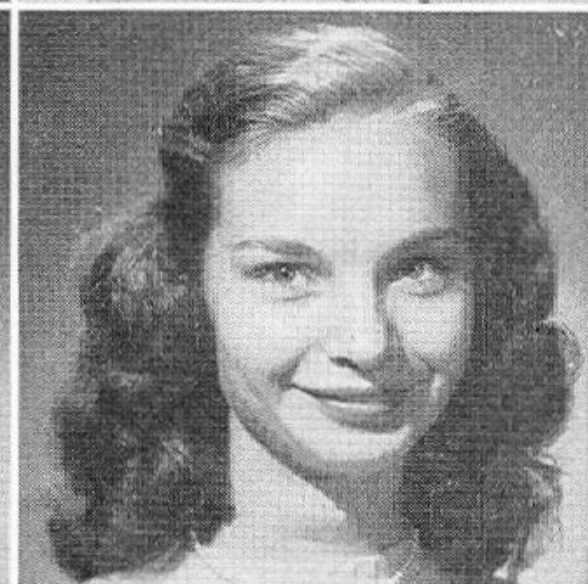
*Bill*

Tumbling team 3 years, J. V. Football 1 year, Hi-Y 3 years, Science Club 2 years, Dramatic Club 1 year.

BARBARA CLARK

*Clarky*

Lost and Found Committee, Home Economics Club 1 year, Sigma Tri-Hi-Y 2 years, Spanish Club 1 year, Glee Club 1 year, Girls' Chorus 1 year.





# SENIORS

BETTY JOYCE COLBLENTZ

*Butch*

Dramatic Club 2 years (Secretary 1 year), Theta Tri-Hi-Y 1 year.

RUBEN DOWELL

*Rube*

DOTT ANN COOPER

*Dittie*

Home Economics Club 2 years, Beta Club 1½ years, Science Club 1 year, Sigma Tri-Hi-Y 1 year, Majorette 1 year, Annual Staff (Club Editor).

TERAH DONALD ELLER

*Ted*

Art Club 1 year, Monogram Club 1 year, Glee Club 2 years, Tennis 2 years.

BARBARA JOAN COVERT

*Babs*

Sigma Tri-Hi-Y 2 years, Office Assistant 2 years, Home Economics Club 1 year, Latin Club 1 year, Dramatic Club 1 year.

STANLEY EVANS

*Stanley*

Monogram Club 2 years, Hi-Y 1 year, Varsity Football 2 years, Shipmate Reporter, Publicity Club 1 year.

SARAH LETTY COX

*Sarah*

French Club (Chaplain), Glee Club, Girls' Chorus, Distributive Education Club.

ROBERT E. FISHER

*Windy*

Basketball 1 year, J. V. Basketball 1 year

SYBIL LONA CRANE

*Sybil*

Office Assistant 4 years, Distributive Education Club 1 year, Tri-Hi-Y 1 year, Girls' Chorus.

JOHN CLIFTON GODWIN

*Buck*

Distributive Education, Band 4 years.

LELIA MAE CRAPS

*Lee*

Sigma Tri-Hi-Y, Library Club, Distributive Education Club (Sergeant-at-Arms).

ROY EARL GRIGGS

*Hollywood*

President of Monogram Club 1 year, Football 3 years, Basketball 2 years, Baseball 1 year, Track 3 years, Presidents' Club 1 year.



# SENIORS

LILA MAE CRIM

*Blondie*

Distributive Education Club

WILLIAM DONALD HARBERT

*Bill*

MARY HELEN CROOM

*Prun*

Sigma Tri-Hi-Y 2 years, Library Club 1 year (Secretary), Home Economics Club 1 year.

ROBERT HARRY HILL

*Bob*

ANGY LOU CULPEPPER

*Lou*

Art Club (President), Beta Club, Presidents' Club, Omega Tri-Hi-Y.

HERMAN CARLTON HILL

*Carlton*

BETTY LARUE CUMMINGS

*Bette*

S. C. A. 3 years (Secretary 2 years), Beta Club 2 years (President), Presidents' Club 3 years, Home Economics Club 2 years (Vice-President of District), Art Club 1 year (Sergeant-at-Arms), Tri-Hi-Y 3 years (Chaplain), Library Club 1 year.

JAMES HENRY JOHNSON, JR.

*Slick*

Monogram Club 1 year (Sergeant-at-Arms), Hi-Y 1 year (Sergeant-at-Arms), J. V. Basketball 2 years, Monogram Club 3 years, Admirals, Hi-Y 3 years, Dramatic Club 1 year, J. V. Football 3 years, Varsity Football 1 year, Varsity Basketball 3 years (Captain 1 year), Tennis 2 years, Photographic Editor of Shipmate, Band 2 years.

JACQUELINE HOPE DEAL

*Jackie*

Omega Tri-Hi-Y 1 year, Alpha Tri-Hi-Y 2 years, J. V. Cheerleader 1 year, Varsity Cheerleader 2 years, Glee Club 2 years, Monogram Club 1 year.

RAYMOND OTTO JOHNSON

*Ray*

Art Club, Publicity Club, Hi-Y, Shipmate Reporter

JANICE ONEAL DEARMON

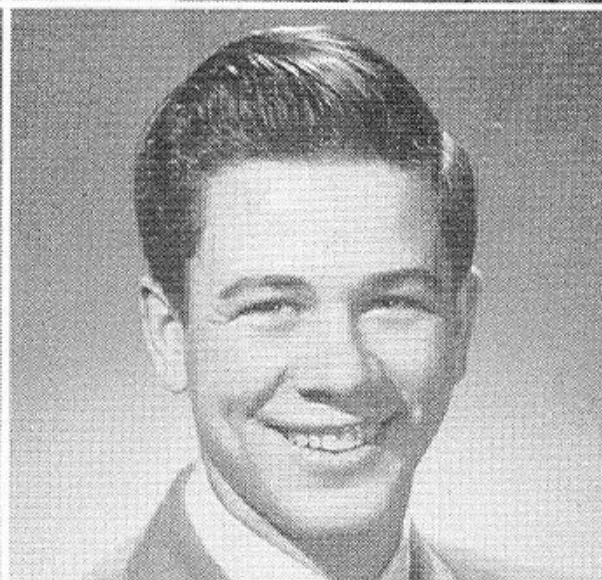
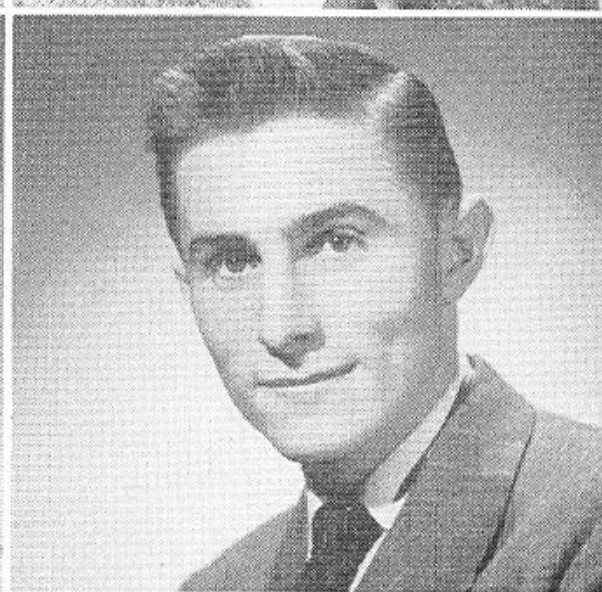
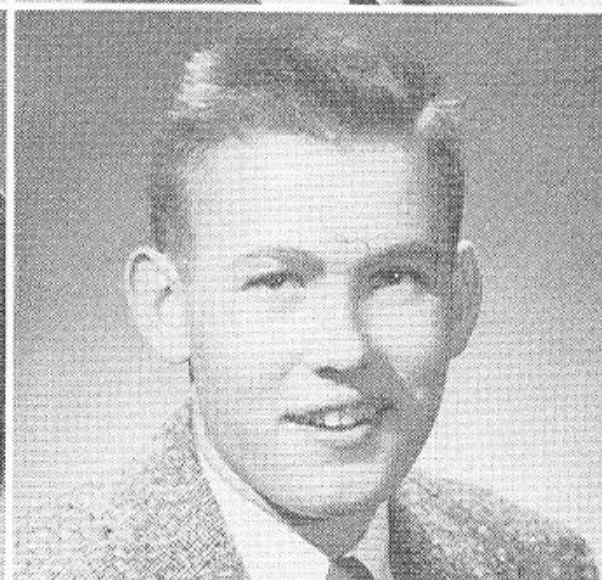
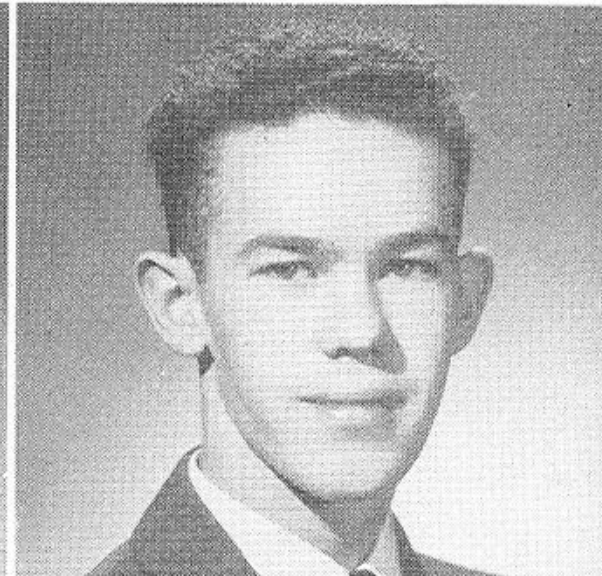
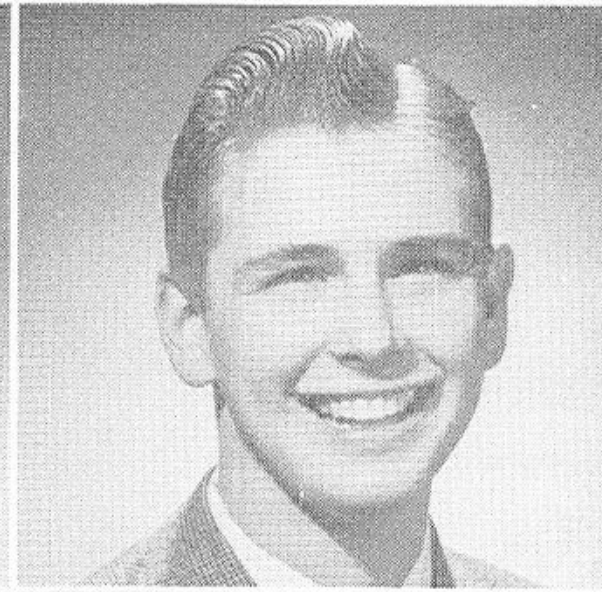
*Janice*

Home Economics Club 1 year

DONALD STEPHEN JONES

*Don*

Captains' Hi-Y 1 year, Admirals' Hi-Y 2 years, Journalism 1 year.





# SENIORS

GEORGE JOHN KAHLER

*Jack*

Hi-Y 2 years (Secretary), Monogram Club 2 years, Tennis 2 years, Baseball (Assistant Manager 1 year, Manager 1 year).

SONIA LYNNE DORSON

*Snowie*

Dramatic Club 1 year (Secretary), Glee Club 2 years, Science Club 2 years, Cheerleader 1 year, Spanish Club 2 years, Sigma Tri-Hi-Y 2 years, Distributive Education Club 1 year, Swimming Club 1 year.

H. A. KEEVER, JR.

*Kee*

Admirals' Hi-Y 2 years, Dramatic Club 1 year, J. V. Baseball 1 year, J. V. Football 3 years, Varsity Football 1 year, Monogram Club 3 years, Football Manager 1 year.

CAROLYN LOUISE DUPRIEST

*Carolyn*

Sigma Tri-Hi-Y 2 years, Science Club 2 years (Secretary), Spanish Club 2 years, Red Cross Representative 1 year, First Aid Room Assistant 1 year.

EDGAR FRANKLIN LOCHSTAMPFOR

*Eddie*

Latin Club 1 year, Beta Club 1½ years, Honor Council (Chairman), Bible Club 2 years (Director 1 year), Presidents' Club 1 year, Shipmate Staff 1 year, Publicity Club 1 year.

NORMA MAE EARLY

*Norma*

Home Economics Club (Treasurer), Office Assistant 3 years, Sigma Tri-Hi-Y 2 years, Dramatic Club, Senior Red Cross Representative.

GENE CARLTON MANLY

*Gene*

Science Club, Shipmate Staff (Photographer)

MARGARET JANE EASON

*Margaret*

Bible Club 2 years

HOWARD DANFORD MALLISON

*Dan*

Distributive Education Club

ALICE SHELTON ELLIOTT

*Red*

Beta Club, Mr. Stenzel's Assistant

JOSEPH E. McLENDON

*Joe*

Hi-Y 1 year, Football 3 years, Monogram Club 3 years, Treasurer of Senior Class, Annual Staff 1 year.

FRANCES ANN EURE

*Frannie*

Omega Tri-Hi-Y 1 year, Alpha Tri-Hi-Y 2 years (Sergeant-at-Arms 1 year, President 1 year), S. C. A. 1½ years, Presidents' Club 1 year (Secretary), Shipmate Staff 2 years (Reporter, Business Manager), Basketball Manager 1 year, Annual Staff 2 years (Associate Editor, Editor-in-Chief).



# SENIORS

LINWOOD ALLAN MOORE

*Champ*

Library Club (Sergeant-at-Arms), Track, Boxing

MARY EVANS

*Mary*

Bible Club 1 year

WILLIAM T. MILLER, JR.

*Bill*

Distributive Education Club (Vice-President), Beta Club 2 years, Art Club 2 years, Dramatic Club.

NORA EMILY EWTON

*Norie*

Art Club 1 year, Glee Club 1 year, Alpha Tri-Hi-Y 1 year, Spanish Club 2 years, Home Economics Club 1 year.

JOHN ALAN MOORE

*Jack*

Science Club

SHIRLEY LEE FAGG

*Penny*

Omega Tri-Hi-Y 1 year, Basketball 1 year, Monogram Club 1 year, Library Club 1 year, Home Economics Club 1 year, Library Assistant 1 year, Shipmate 1 year.

CLAUDE REUBEN NORTON

*Reuben*

Baseball Manager, Distributive Education Club

BARBARA ANN FEREBEE

*Ferebee*

Latin Club 3 years (Chaplain), J. V. Cheerleader

WILLIAM H. OWENS

*Billy*

Beta Club 1 year, Science Club 1 year, Admirals' Hi-Y 1 year.

MARY ANNE FLETCHER

*Flippy*

Spanish Club 1 year, Home Economics Club 1 year, Art Club 2 years, Alpha Tri-Hi-Y 2 years (Secretary), Beta Club 2 years (Secretary), Glee Club 1 year, Circulation Manager of Annual Staff, Home Room Representative.

JOHN BOSMAN PARKER

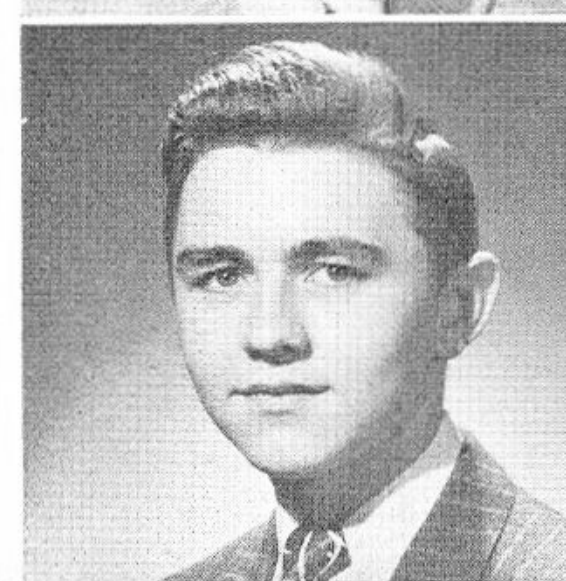
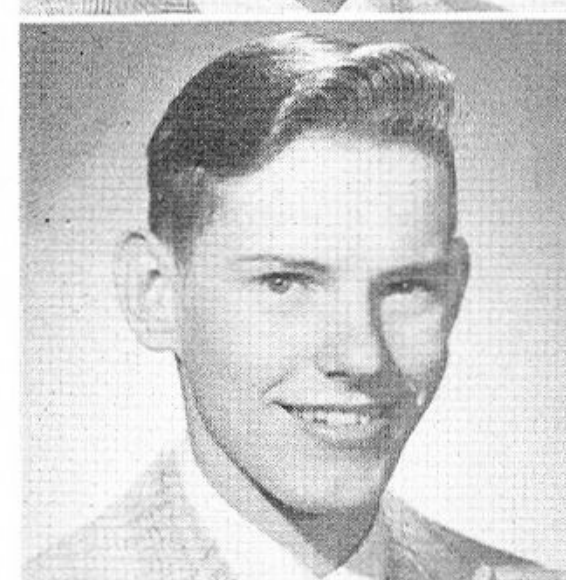
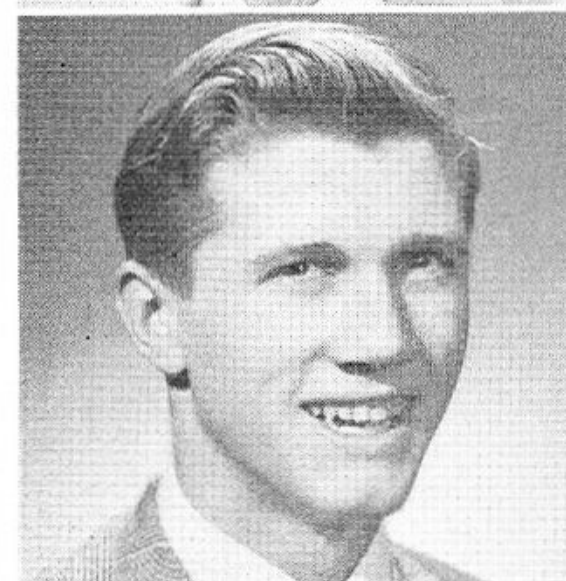
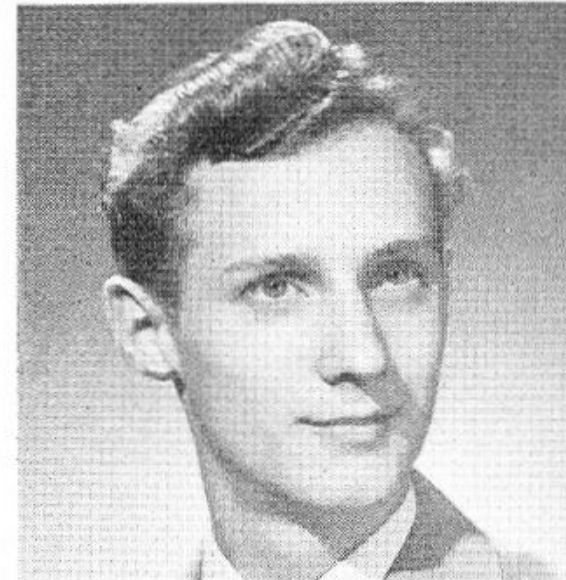
*Johnny*

Junior Hi-Y (Vice-President), Hi-Y (Treasurer), J. V. Football 1 year, Varsity Football 1 year.

LESLIE DOLORES FOSTER

*Les*

Beta Club 2 years





# SENIORS

NORMA MAE GIBBS

*Nornee*

Home Economics Club 3 years, Library, Dramatics 3 years, Tri-Hi-Y 3 years (Treasurer, Corresponding Secretary), Art Club 2 years, Debate Club 4 years (President, Secretary, Treasurer), Shipmate 3 years (Headline Editor, Make-Up Editor, Reporter), Monogram Club, Publicity Club 3 years, Student Sponsor Freshman Dramatic Club, Presidents' Club, Spanish Club.

DONALD CHARLES POPE

*Coach*

J. V. Basketball

LUCY GARNES

*Lucy*

Tri-Hi-Y 2 years, Debate Club 2 years, Latin Club 3 years, Office Assistant 1 year, Home Economics Club 1 year.

JOHN CLEVELAND PRICE

*J. C.*

Art Club, Boys' Club

BETTY JUNE GILBERT

*Betty*

Home Economics Club 1 year, Bible Club 1 year, Monogram Club 3 years, Shipmate Staff (Reporter, Make-up Editor, Business Manager).

BOBBY LEE QUEEN

*Bobby*

Monogram Club 2 years, Baseball team (Manager)

JUNE ELIZABETH GRIFFIN

*June Bug*

Distributive Education Club, Journalism Club

RICHARD HENRY RAMSEY

*Dick*

S. C. A. 4 years, J. V. Basketball 2 years, Varsity Basketball 1 year

LAVONNE VIRGINIA GROFF

*Butch*

Basketball 4 years (Captain), Softball 4 years, Monogram Club 4 years (Treasurer), Home Economics 2 years, Tri-Hi-Y 2 years (Sergeant-at-Arms), Annual Staff 1 year (Sports Editor).

BILLY EUGENE REDMON

*Bill*

Library Club, Traffic Control, Art Club

PATRICIA LOU GRUBBS

*Patt*

Home Economics Club 1 year, Monogram Club 2 years, Softball 2 years, Library Club 1 year.

CHARLES EDWARD SHOTZBERGER

*Shotzy*

Latin Club, Shipmate Reporter, Dramatic Club 2 years, Publicity Club, Science Club.



# SENIORS

VIRGINIA CAROLYN GROOM

*Ginny*

Glee Club 1 year, Spanish Club 1 year, Junior English Club, Dance 2 years, Dramatic Club.

EDWARD SAMUEL PATTERSON

*E. S.*

ELEANOR RUTH GUTHRIE

*Eleanor*

Glee Club 1 year, Distributive Education Club 1 year, Beta Club 1 year, Home Economics Club 1 year.

JOSEPH CHARLES SIMONS

*Joe*

Admirals' Hi-Y 4 years, Monogram Club 1 year, Football 1 year, Basketball 1 year, J. V. Football 2 years, J. V. Basketball 3 years.

PAT HACKNEY

*Shorty*

Girls' League, Glee Club, Dramatic Club, Distributive Education Club.

BENJAMIN EDWARD SITTEKSON, JR.

*Ben*

Junior Hi-Y 1 year, Admirals' Hi-Y 2 years, Library Club 2 years, Substitute Bus Driver 1 year.

BETTY JUNE HARRIS

*Betty*

Sigma Tri-Hi-Y 1 year, Home Economics Club 1 year

HUGH FRANKLIN SMITH

*Smitty*

Library 1 year, Baseball Manager 1 year, J. V. Football 1 year, J. V. Basketball 1 year, Monogram Club 2 years, Bus Conductor 1 year.

CATHERINE E. HAAS

*Cathy*

BILLY BRUCE SOUTHERLAND

*Bruce*

Monogram Club 3 years (Vice-President), J. V. Football 1 year, Track team 4 years.

RUTH JEWELL HAWKINS

*Jewell*

Home Economics Club

RAYMOND A. SPIRES

*Ray*

Junior Hi-Y 1 year, Senior Hi-Y 2 years, Dramatic Club 1 year, Science Club 2 years, Band 4 years, J. V. Football 1 year, Track 3 years.





# SENIORS

## REGINALD ERNEST SWEAT

*Reggie*

Hi-Y 4 years (President), Monogram Club 1 year, J. V. Football 2 years, Varsity Football 1 year, S. C. A. 1 year, Presidents' Club 1 year, Band 2½ years.

## MIINNE LEE HOLLOWELL

*Minnie*

Omega Tri-Hi-Y 1 year, Sigma Tri-Hi-Y, Latin Club 1 year.

## BILLY L. TOLBERT

*Bill*

Publicity Club, Shipmate Reporter

## PEGGY ANN HOUSTON

*Piggie*

## PERCIVAL ALBERT VINCENT, JR.

*Percy*

Art Club, Library Club

## MARGARET AUBREY HUNSUCKER

*Red*

Monogram Club, Library Club, Glee Club 1 year, Basketball 2 years, Softball 2 years, Girls' Chorus.

## MORRIS J. WAGNER

*Morris*

## ANNA LEE HUTCHENS

*Anna*

Art Club 1 year, Sigma Tri-Hi-Y 2 years, Home Economics Club 1 year, Office Assistant 2 years.

## JAMES O. WHARAM

*James*

Distributive Education Club (President), Presidents' Club, Basketball

## BETTY LOU JOHNSTON

*Betty*

Latin Club (Secretary 2 years), S. C. A. 2 years (Treasurer), Presidents' Club 1 year, Senior Committee 1 year, Advertising Manager of Annual 1 year, Chairman of Office Assistants' Committee.

## LOREN WHITE

*Loren*

Hi-Y 1 year, J. V. Baseball, Band 2 years

## DOROTHY KELLAM

*Dottie*

Glee Club 3 years, Home Economics Club 1 year



# SENIORS

CHARLES D. WIGGS

*Wiggs*

Distributive Education Club 1 year

VELERIA MARCELINE LaFRAGE

*Marcy*

Glee Club, Distributive Education Club (Publicity Manager)



GUSTAVE B. WILLIAMS

*G. B.*

Admirals' Hi-Y, Band, Captains' Hi-Y

NORMA JEAN LEWIS

*Jean*

Sigma Tri-Hi-Y 2 years, Lost and Found Committee 1 year, Home Economics Club 1 year.



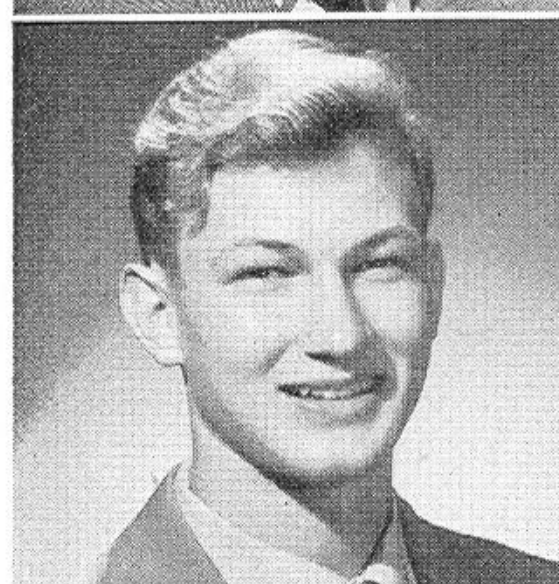
ROBERT L. WILLIAMS, JR.

*Rabbit*

DORIS IONE LODEN

*Dot*

Art Club, First Aid Assistant



JOHN WAYNE WILLIAMS

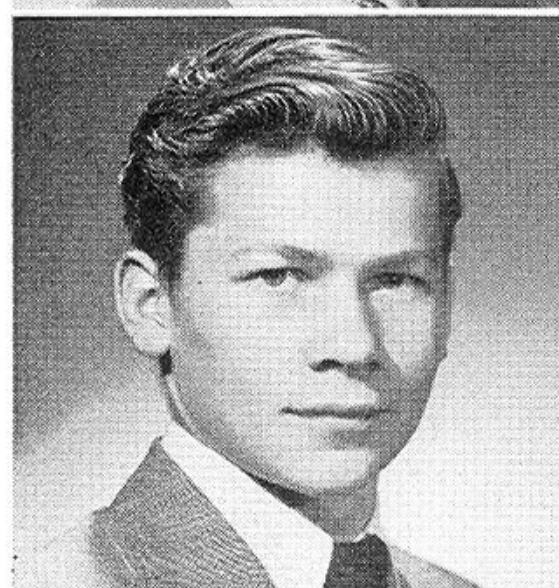
*Wayne*

Hi-Y 3 years, Band 3 years

BETTY JO MATTHEWS

*Jo*

Monogram Club 3 years, Home Economics Club 1 year, Softball 1 year, Feature Editor of Shipmate 1 year, Basketball 1 year, Reporter of Shipmate, Sports Editor of Shipmate, Publicity Club 1 year.



KEITH WOOD WILLIFORD

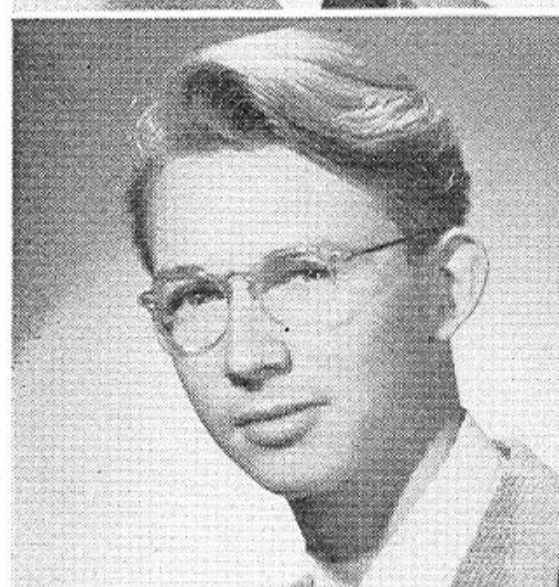
*The Blank*

Distributive Education Club

DORIS MAY MATHEWS

*Doris*

Glee Club



JOHN GRAHAM WILHITE

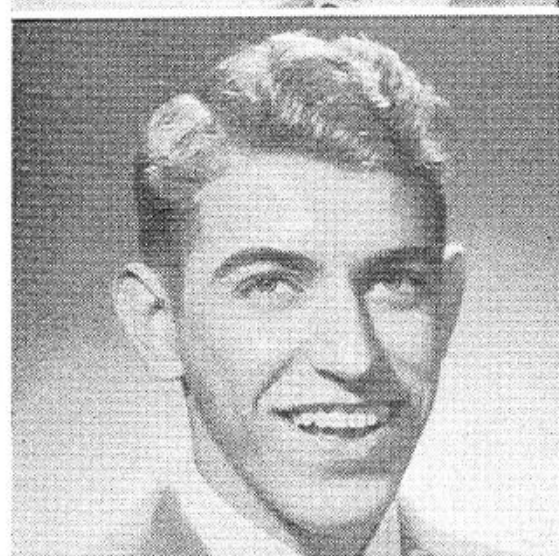
*Johnny*

Art Club, Distributive Education Club

NANCY GARNETTE MATTHEWS

*Nance*

Art Club 1 year, Tri-Hi-Y 2 years, Home Economics Club 1 year.





# SENIORS

MABEL NEFF

*Mabel*

Art Club 2 years, Home Economics Club 2 years, Glee Club 1 year.

HELEN MARIE MELMS

*Feetsey*

Music Club, Home Economics Club, Distributive Education Club

PEGGY JEAN NEWSOME

*Jeanne*

Softball, Home Economics Club 1 year, Monogram Club 1 year, Shipmate Reporter, Art Club 1 year, Publicity Club 1 year, Majorette 1 year.

BETTY McCORMICK

*Betty*

Basketball, Monogram Club

MARY JANE OLIVER

*Janie*

S. C. A. 1 year, J. V. Cheerleader 1 year, Officers' Club 1 year, Omega Tri-Hi-Y 1 year (Secretary), Alpha Tri-Hi-Y, Home Economics Club 1 year, Glee Club 1 year, Library Assistant.

DOROTHY LOUISE McINTYRE

*Dot*

Alpha Tri-Hi-Y 2 years

JOYCE ROBERTA OVERTON

*Happy*

S. C. A. 3 years, Lost and Found Committee (Chairman), Glee Club 2 years, J. V. Cheerleader 2 years (Head cheerleader 1 year), Omega Tri-Hi-Y 1 year, Shipmate Staff 2 years (Reporter, Sports Editor), President of Sophomore Class, Secretary of Senior Class, Sigma Tri-Hi-Y 2 years (Treasurer), Dramatic Club 1 year, Cheerleader 1 year, Monogram Club 1 year, Basketball team 1 year (Captain), Manager of Softball team, Assistant Editor of Annual.

EDITH H. McLENDON

*Edith*

Distributive Education Club, Alpha Tri-Hi-Y 2 years (Treasurer)

BETTY SUE PALMER

*Sue*

Monogram Club 4 years, Tri-Hi-Y 3 years (Chaplain), Dramatic Club 2 years, Art Club 2 years, Home Economics Club 2 years (Secretary 2 years), Secretary of Publicity Club 1 year, Quill and Scroll 1 year, Editor-in-Chief of Shipmate, Shipmate Staff 4 years, Basketball team 2 years, Softball 1 year, Cheerleader 4 years, Head Cheerleader 3 years, Officers' Club 1 year, Spanish Club 2 years.

BETTY ANN NANCE

*Betty*

One year in Office Force, Art Club 2 years (Corresponding Secretary), Publicity Club, Sigma Tri-Hi-Y, Dramatic Club, Art Editor of Shipmate (Reporter.)

DIANE ADELL PARKER

*Diane*

Beta Club, Secretary of Art Club

EUNICE NEEDHAM

*Eunice*

Tri-Hi-Y, Distributive Club



# SENIORS

## GWENDOLYN LEE RIFFLE

*Gwen*

Omega Tri-Hi-Y 1 year, Sigma Tri-Hi-Y 2 years, Library Club 1 year, Home Economics Club 1 year, Office Assistant 1 year.

## AUBREY JEAN SAVAGE

*Jean*

Softball and Basketball team (Speed, N. C.), Beta Club, Glee Club (Tarboro, N. C.), Cheerleader, Beta Club, Glee Club (Tarboro, N. C.), Glee Club, Art Club, Distributive Education Club (Secretary 1 year).

## MARION ANNE RIGGAN

*Marion*

Glee Club, Art Club 2 years, Distributive Education Club (Treasurer)

## RUBY LEONA SCHLEGLER

*Ruby*

President Freshman Club, Home Economics Club 2 years, Tri-Hi-Y 2 years, Basketball 1 year, J. V. Cheerleader 2 years (Head Cheerleader 1 year), Shipmate Staff 2 years (Headline Editor 1 year), Reporter, Monogram Club 1 year, Debate team 2 years, Public Speaking 1 year, S. C. A. 1 year.

## LENACE JEANETTE ROBINETTE

*"Wobbles"*

Home Economics Club 2 years, Glee Club, Bible Club 2 years, Alpha Tri-Hi-Y.

## JOYCE NEALE SELBY

*Neale*

Dramatic Club 2 years, Theta Tri-Hi-Y

## ANNE LEE ROE

*Anne*

Home Economics Club 1 year, Alpha Tri-Hi-Y 1 year, Publicity Club 1 year, Office Assistant 1 year, Shipmate Staff 1 year.

## JUNE PAULINE SKELTON

*Juney*

Art Club, Glee Club, Home Economics Club, Monogram Club, Softball.

## EDNA ROWE

*Eddie*

Home Economics Club 2 years, Dramatic Club 1 year, Distributive Education Club 1 year.

## JANET MARIE SHAWVER

*Peaches*

## NANCY LEE RUCKER

*Nancy*

## LAQUITA JOY SLOAN

*Quita*

Latin Club, Home Economics Club, Office Assistant, Glee Club 2 years, Girls' Chorus, Double Sextet.





# SENIORS

EVA ALICE WATSON

*Eva*

Band 4 years, Sigma Tri-Hi-Y 1 year, Monogram Club 2 years, Debate Team 1 year, Art Club 1 year, G. A. A. 1 year, Southgate Literary Society, Mummies' Dramatic Club, Intramural Basketball.

RUTH SMITH

*Ruthie*

Bible Club, Home Economics 1 year, Softball team

JOSIE ANN WEATHERLY

*Joe*

Glee Club 3 years, Art Club 1 year, Home Economics Club 1 year.

CARRIE LEE SPEAR

*Carrie*

Home Economics Club 3 years, Tri-Hi-Y 2 years, Library Club 1 year.

BARBARA ANN WEIKERT

*Weikert*

Varsity Cheerleader, J. V. Cheerleader, Sigma Tri-Hi-Y, Dramatic Club, Latin 2 years, Home Economics Club 2 years, Alpha Tri-Hi-Y 1 year, S. C. A. 1 year, Home Room Representative 1 year.

ANN LEE TERKEURST

*Al*

Music Club, Spanish Club 1 year, Radio Club 1 year, Debate Club 2 years, Monogram Club 1 year, Glee Club 1 year, Publicity Club 1 year, Bible Club 2 years, Shipmate Staff (Reporter 1 year).

JACKSIE ANN WHITEHURST

*Jackie*

Office Assistant 1 year, Library Club, Bible Club 1 year

MILDRED THARRINGTON

*Mildred*

MILDRED JOYCE WHITEHURST

*Joyce*

Latin Club 1 year, Beta Club 1½ years, Cheerleader 1 year, Glee Club 1 year, Sigma Tri-Hi-Y 2 years (Vice-President 1 year).

ARLIENE MARY CATHERINE UMBERGER

*Arliene*

Glee Club, Distributive Education Club 3 years, Tri-Hi-Y

PATTY ANN WILLIAMS

*Pat*

Softball 4 years (Captain 2 years), Art Club 2 years, Monogram Club 3 years, Publicity Club 1 year, Home Economics Club 3 years, Majoette 1 year, Basketball 4 years (Captain 1), Music Club 1 year, Dramatic Club 1 year.

PATRICIA ANN VINCENT

*Pat*

Art Club 1 year